



17000
TRIPLE ZERO

How to find your logon details on a Windows computer

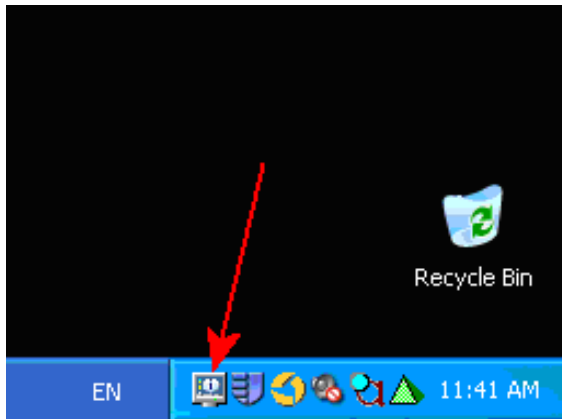
How to find your logon details on a Windows Computer.

This process is meant to be used on a computer running Windows XP only.

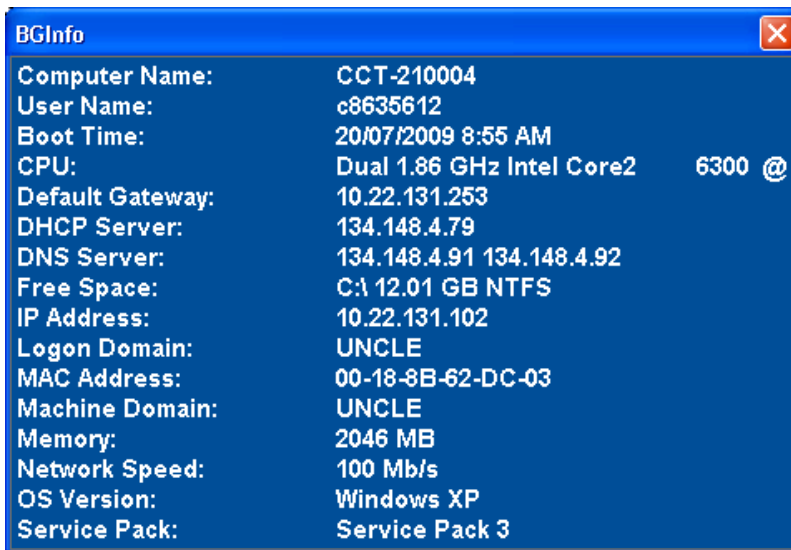
There are many ways of finding these details but I've listed two fairly simple ways. BGInfo is a freeware tool that is included in the standard windows XP install at the University. If you do not have it installed you will be able to use the second procedure below 'Using command line tools'.

Using the software tool BGInfo

1. log in to your computer.
2. Click on the bginfo icon in taskbar at the bottom right hand corner of the screen.



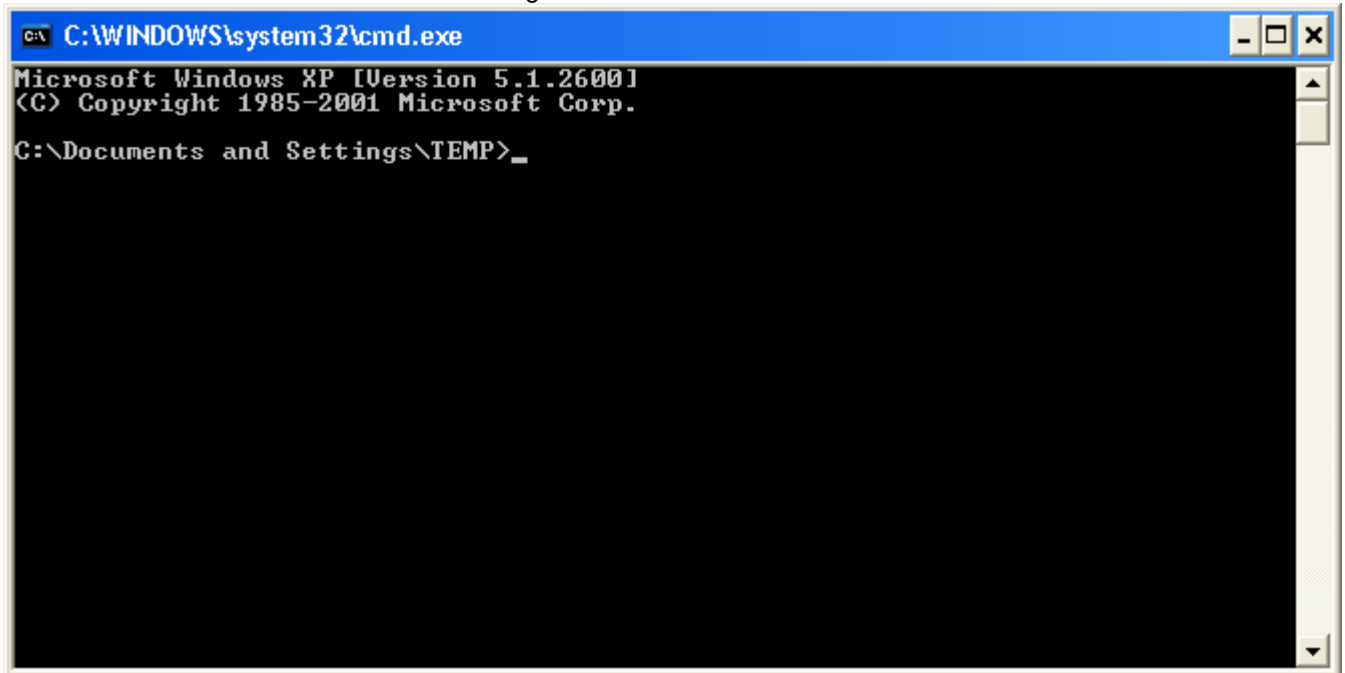
3. The BGInfo window will appear on the screen looking something like this:



4. 'computer name' is listed first.
'username' is listed second,
'IP address' is listed ninth and should look like www.xxx.yyy.zzz
'logon domain' is listed tenth and is usually UNCLE.
5. Press the Red X button to close the window.

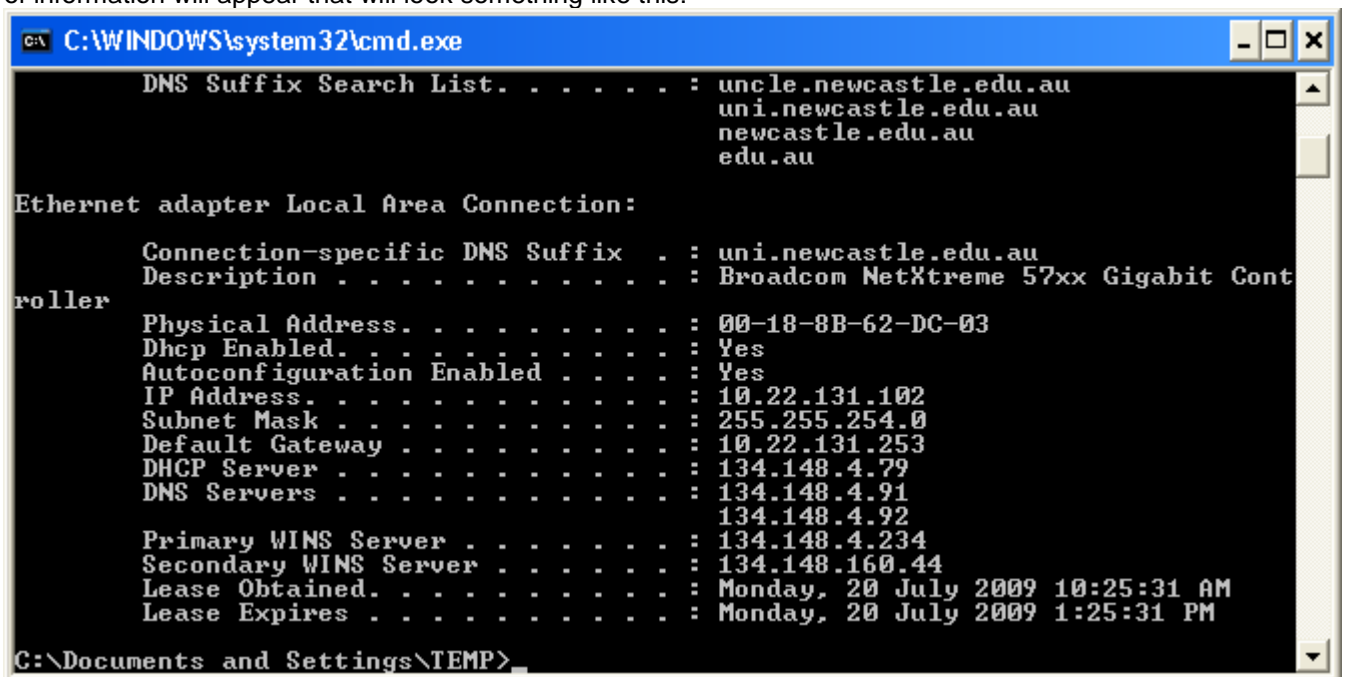
Using command line tools

1. Log in to your computer
2. Click on **[Start]** and then choose **Run...**
3. At the **Open:** prompt, type in **cmd** and press **[Enter]**. This will open up a window with a command line interface. It will look something like this:



```
C:\WINDOWS\system32\cmd.exe
Microsoft Windows XP [Version 5.1.2600]
(C) Copyright 1985-2001 Microsoft Corp.
C:\Documents and Settings\TEMP>
```

5. At the command prompt, type **ipconfig /all**. There is a space between 'ipconfig' and '/all'. A list of information will appear that will look something like this:



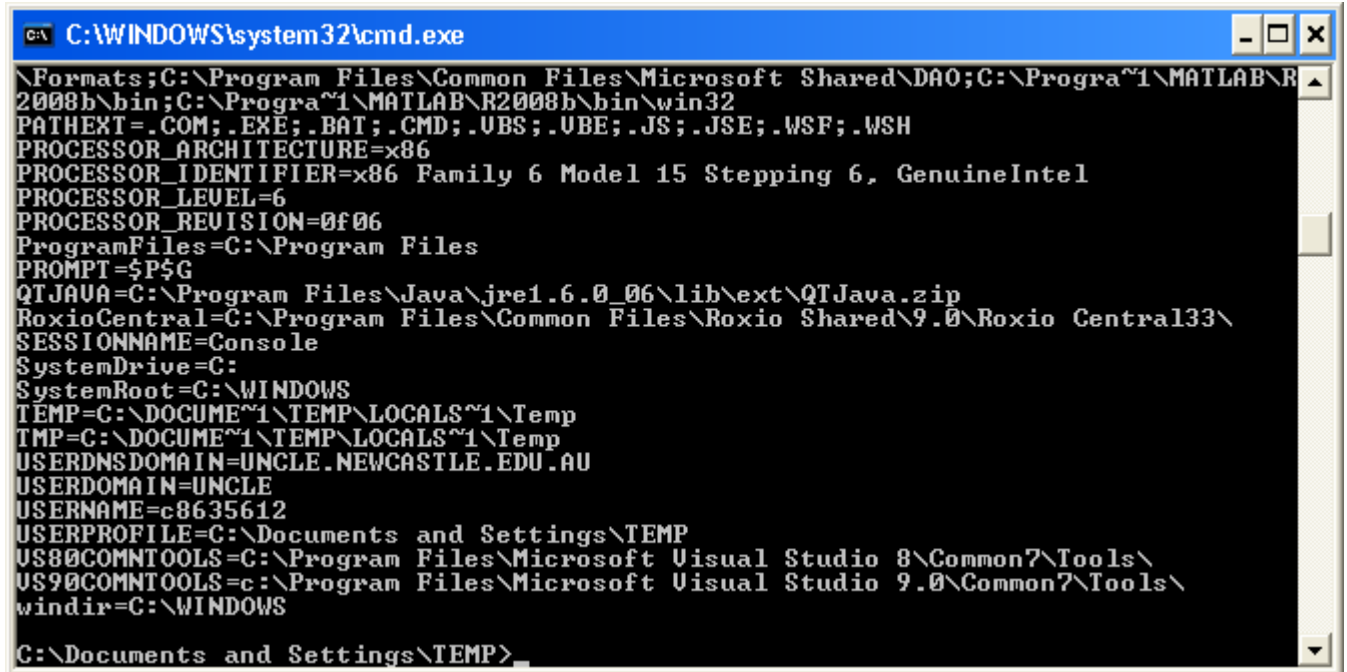
```
C:\WINDOWS\system32\cmd.exe
DNS Suffix Search List . . . . . : uncl.newcastle.edu.au
                                uni.newcastle.edu.au
                                newcastle.edu.au
                                edu.au

Ethernet adapter Local Area Connection:

    Connection-specific DNS Suffix  . : uni.newcastle.edu.au
    Description . . . . .           : Broadcom NetXtreme 57xx Gigabit Cont
roller
    Physical Address . . . . .       : 00-18-8B-62-DC-03
    Dhcp Enabled . . . . .           : Yes
    Autoconfiguration Enabled . . . . : Yes
    IP Address . . . . .             : 10.22.131.102
    Subnet Mask . . . . .            : 255.255.254.0
    Default Gateway . . . . .        : 10.22.131.253
    DHCP Server . . . . .            : 134.148.4.79
    DNS Servers . . . . .            : 134.148.4.91
                                    134.148.4.92
    Primary WINS Server . . . . .    : 134.148.4.234
    Secondary WINS Server . . . . .  : 134.148.160.44
    Lease Obtained . . . . .         : Monday, 20 July 2009 10:25:31 AM
    Lease Expires . . . . .          : Monday, 20 July 2009 1:25:31 PM

C:\Documents and Settings\TEMP>
```

6. Read through the list and find 'Host name...'. This is your computer's name. You may need to scroll up.
7. Read through the list and find 'IP Address...'. This is your computer's IP address
8. At the command prompt type set and [Enter]. You will see something like this:



```
C:\WINDOWS\system32\cmd.exe
Path=C:\Program Files\Common Files\Microsoft Shared\DAO;C:\Program Files\Microsoft Shared\DAO;C:\Program Files\Microsoft Shared\DA
2008b\bin;C:\Program Files\Microsoft Shared\DA
PATHEXT=.COM;.EXE;.BAT;.CMD;.UBS;.UBE;.JS;.JSE;.WSF;.WSH
PROCESSOR_ARCHITECTURE=x86
PROCESSOR_IDENTIFIER=x86 Family 6 Model 15 Stepping 6, GenuineIntel
PROCESSOR_LEVEL=6
PROCESSOR_REVISION=0f06
ProgramFiles=C:\Program Files
PROMPT=$P$G
QTJAVA=C:\Program Files\Java\jre1.6.0_06\lib\ext\QTJava.zip
RoxioCentral=C:\Program Files\Common Files\Roxio Shared\9.0\Roxio Central33\
SESSIONNAME=Console
SystemDrive=C:
SystemRoot=C:\WINDOWS
TEMP=C:\DOCUMENTS AND SETTINGS\TEMP\LOCALS~1\Temp
TMP=C:\DOCUMENTS AND SETTINGS\TEMP\LOCALS~1\Temp
USERDNSDOMAIN=UNCLE.NEWCASTLE.EDU.AU
USERDOMAIN=UNCLE
USERNAME=c8635612
USERPROFILE=C:\Documents and Settings\TEMP
US80COMNTTOOLS=C:\Program Files\Microsoft Visual Studio 8\Common7\Tools\
US90COMNTTOOLS=C:\Program Files\Microsoft Visual Studio 9.0\Common7\Tools\
windir=C:\WINDOWS
C:\Documents and Settings\TEMP>
```

9. Search through and find USERDOMAIN (usually toward the bottom of the list). This is the domain you are logged into. This should be listed as 'UNCLE'. If the USERDOMAIN is not listed as UNCLE but is the same as your computer name then you are logged in with a local logon account and not a domain logon account. This is important to know.
10. Search through and find USERNAME (usually after USERDOMAIN). This is your logon id or logon account.
11. Type **exit** and press [Enter] to close the command line window.