

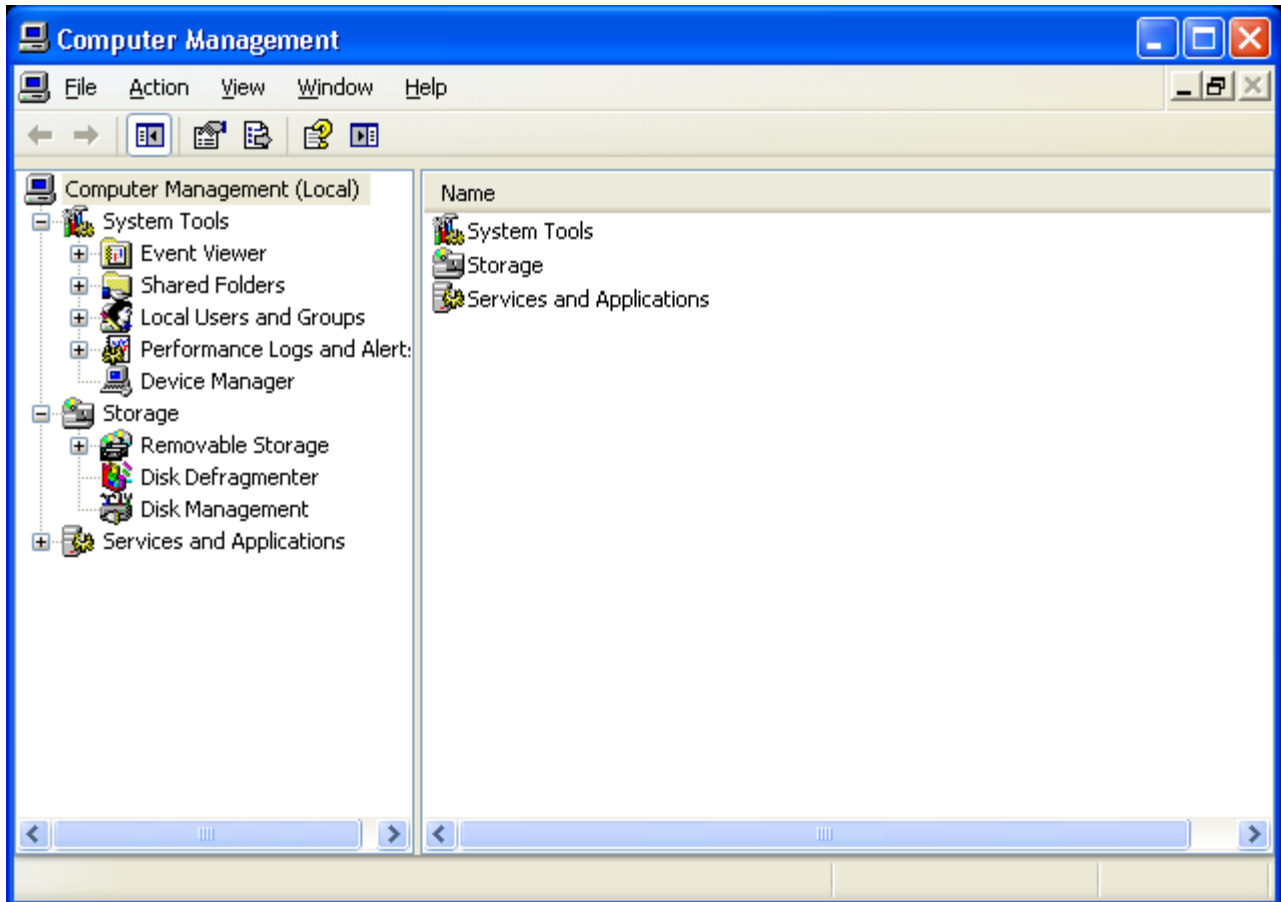


**17000**  
TRIPLE ZERO

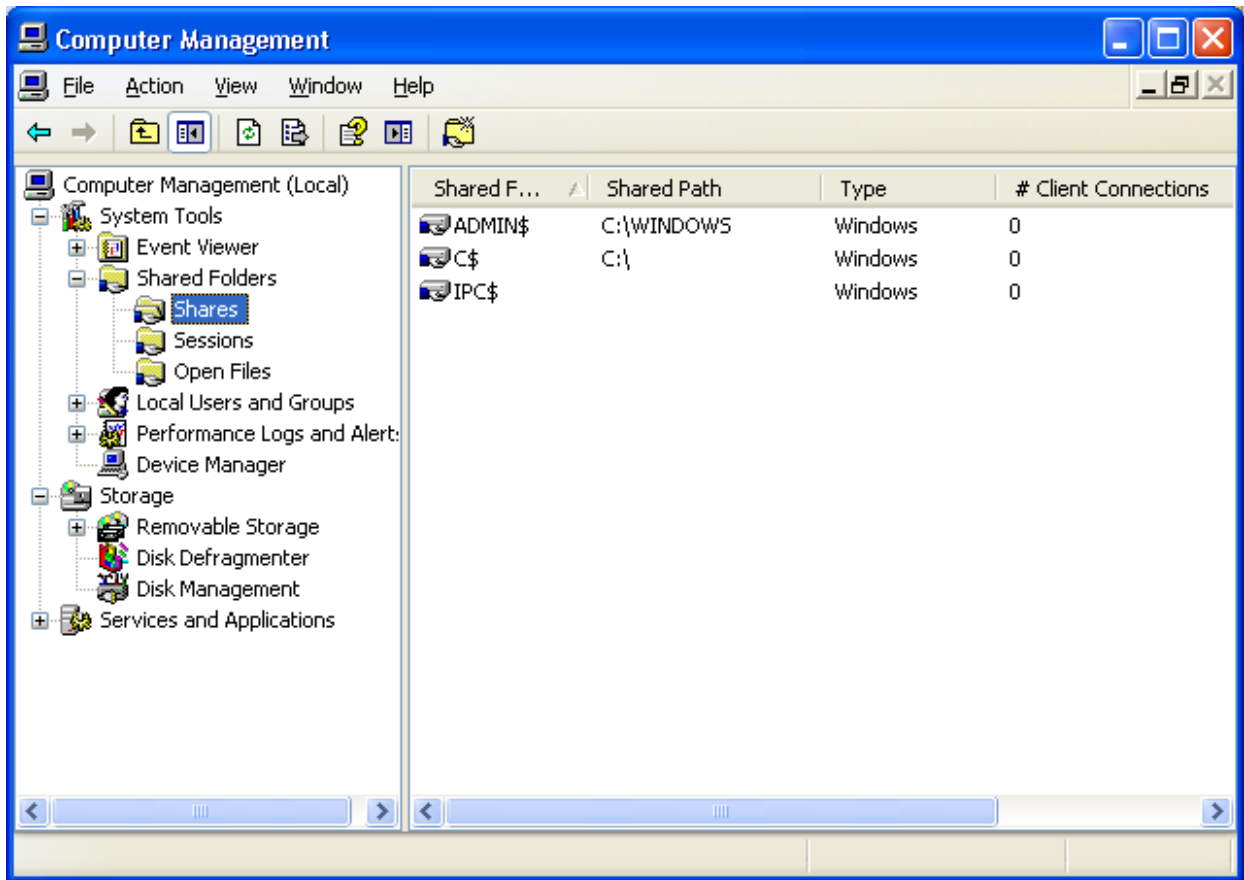
# How to see what shares are available on your Windows computer

Windows XP

1. log on to your computer
2. Right click on 'My Computer' and choose 'Manage' from the menu. The 'Computer Management' Window will appear.



3. Click on the '+' next to 'Shared Folders' and then click on 'Shares' to display the available shares on your computer.  
If you are a local administrator of your computer you will see something like this:



If you get an error message 'Error: 5 Access is denied.' Then you do not have Administrative access to the computer. If this is the case, please contact 17000 who can add you as a local administrator of your computer.